

BIOCORP



 Mallya

Quick Start Guide

TURN YOUR INSULIN PEN INTO A SMART DEVICE



Mallya captures insulin injection data and sends the information to a compatible mobile app by Bluetooth.

FEATURES

Mallya is composed of a base and a button that can be mounted on a disposable insulin pen.

Mallya allows you to:

- Record the dose selected for injection (insulin dose),
- Record the day and time when each insulin dose was injected,
- Transmit the dose, day/time when each insulin dose was injected to a compatible mobile application on a Bluetooth paired smartphone.

INTENDED USE

Mallya aims to help patients keep accurate records of their insulin injections.

Mallya can be used without any connection to a mobile application (in which case, injection data are not recorded and cannot be shared) or it can be connected to a mobile application.

* READ THE INSTRUCTIONS FOR USE (AVAILABLE ONLINE AT MY-MALLYA.COM)
TO ACCESS COMPLETE LIST OF WARNINGS AND CAUTIONS



Warnings: improper operation may result in serious injury or death

- Disconnect Mallya from the USB power cable before using Mallya.
- Mallya is not waterproof and holds no protection against the infiltration of water or moisture:
Do not immerse the device in water or do not clean it under running water. Do not expose the device to moisture.
- Avoid using Mallya near PACEMAKERS and DEFIBRILLATORS.
- Mallya contains a magnet. Avoid contact with metallic parts during use.
- Do not disassemble, modify or repair the device by yourself.
- All repairs should be carried out by the dealer authorised by BIOCORP PRODUCTION, whose information is given on the packaging.
- Do not expose the device to a temperature above 40°C (104°F) or flames.



Cautions: improper operation may result in bodily injury or property damage

- Please consider all instructions carefully before using the device.
- Protect your personal health data by using a password on your smartphone.
- Do not wipe the exterior of Mallya with chemical products or solvent (e.g. acetone) as it may lead to discoloration or deterioration.
- If the device has been subjected to an external mechanical shock (knocking, shocking, falling, etc.), this may cause a malfunction. In such case, please contact a dealer authorised by BIOCORP PRODUCTION for technical assistance.
- Mallya is supplied with a USB cable. Do not use any other cable. Use the cable supplied with the device to connect it to the USB power port.

STEP 1

> DOWNLOAD A COMPATIBLE APP

Mallya connects your insulin pen to your smartphone.

Use a compatible application to keep track of your insulin injections.

Download the application from:



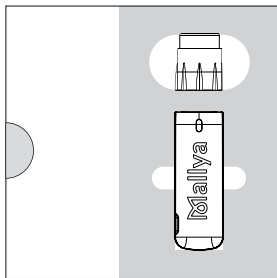
**Apple
Store**




**Play
Store**

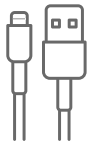
STEP 2

> UNPACK EQUIPMENT



Notes:

- Packaging contains 2 buttons (1 being a spare).
- The reset key () is not needed for setup.



1x
**USB
CABLE**



1x
**MALLYA
BASE**



ou
2x
**MALLYA
BUTTON**

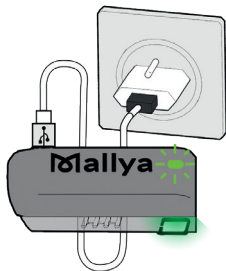


1x
**RESET
KEY**

STEP 3

> CHARGE THE BASE

Using the supplied USB cable, connect the Mallya base to a USB port or socket. Leave the device charging for at least 10 minutes and then go to step 4.



The Mallya LED slowly flashes green when the base is being charged.

Note:

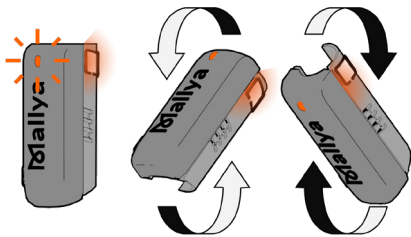
Optimum autonomy is reached after approximately 2 hours of charging.

STEP 4 > UNPLUG AND CALIBRATE MALLYA BASE

Disconnect Mallya base from the USB cable.

If no light appears after unplugging the base, go directly to step 5. →

If the LED flashes orange, slowly tilt the base from side to side to CALIBRATE.



Continue tilting until:

✓
The base beeps and the LED turns green.



✓
Then the LED turns off.



STEP 5

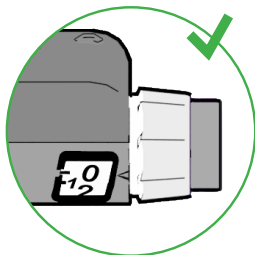
> MOUNT MALLYA BASE ONTO THE PEN



5.1 - Hold Mallya base so that the clear square plastic window is facing you.

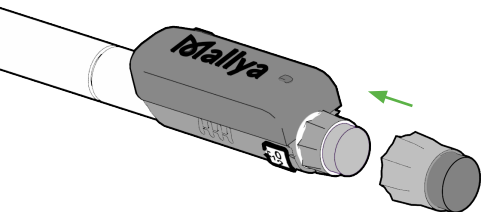
5.2 - Align the base dose window with the pen dose window then clip the base onto the pen.

5.3 - Make sure Mallya dose window is well aligned with the pen dose window.



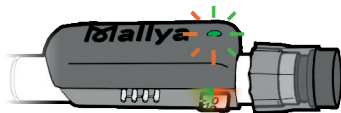
STEP 6

> MOUNT MALLYA BUTTON ONTO THE PEN



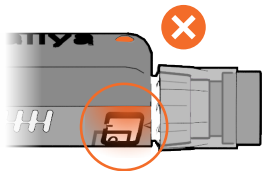
Place the Mallya button over the pen button, then push down.

Mallya LED flashes **orange** and **green** when base and button are properly mounted onto the pen.

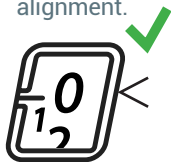


Note - LED remaining orange may indicate that:

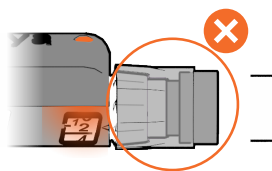
Dose windows are not properly aligned.



Proper alignment.



Mallya button is not pushed enough.

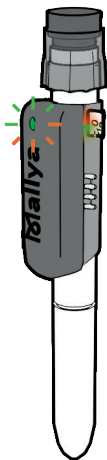


STEP 7 > PAIR MALLYA WITH YOUR SMARTPHONE

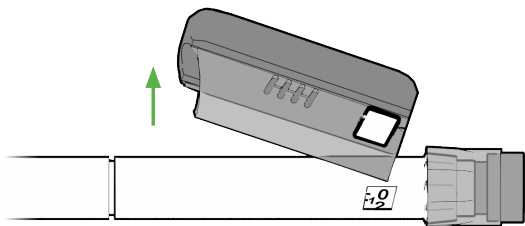
A - Make sure that Mallya is within 12 inches of your smartphone.

B - Open the application and follow the instructions for pairing.

When Mallya LED turns green, pairing is done and your insulin pen is ready for use:



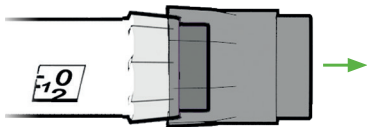
TRANSFERRING MALLYA TO A NEW PEN



A - Holding the pen tightly with one hand, remove the base with the other hand.

B - Remove the Mallya button from the pen button.

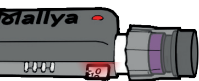
C - Follow steps 5 and 6 to mount base and button onto your new insulin pen.



Mallya base and button are only compatible with disposable insulin pens of the selected model (**Solostar – Kwikpen – Flexpen**).

Do not mount, pair or use your Mallya with another insulin pen model.

DESCRIPTION OF LED SIGNALS



Red (solid)

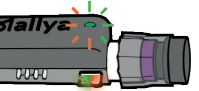
- Remove Mallya from the pen and recalibrate (step 4),
- If the problem persists, reset Mallya (please read the instructions for use),
- If the problem is not solved, contact Mallya authorised dealer service line.



Green (slow flashing) Mallya is on charge (see step 3).



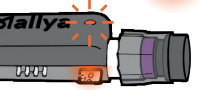
Green (solid) Mallya is properly mounted on the pen (see step 7).



Alternative Orange and green Rapid flashing Pair Mallya with your smartphone (see step 7).



Orange (rapid flashing) Calibration is in progress (see step 4).



Orange (flashing every 15 seconds) Battery is low. Put Mallya on charge (see step 3).



Orange (solid) Position error: make sure that the pen dose dial is set to "0".
Mounting error: check that Mallya base and button are properly mounted on your pen (see steps 5 and 6).

Instructions for use are available on my-mallya.com website.

All illustrations in this guide are based on a Mallya for Solostar. However, all the steps described above can be transposed identically, regardless of the model of your Mallya (Kwikpen - Solostar - Flexpen).

EU Simplified Conformity Declaration

The undersigned BIOCORP PRODUCTION declares that the radio equipment of the Mallya type complies with Directive 2014/53/EU. The full text of the EU Declaration of Conformity is available at the following internet address: my-mallya.com

BIOCORP

PT Lavour La Bechade
63500 Issoire
FRANCE

www.biocorp.fr